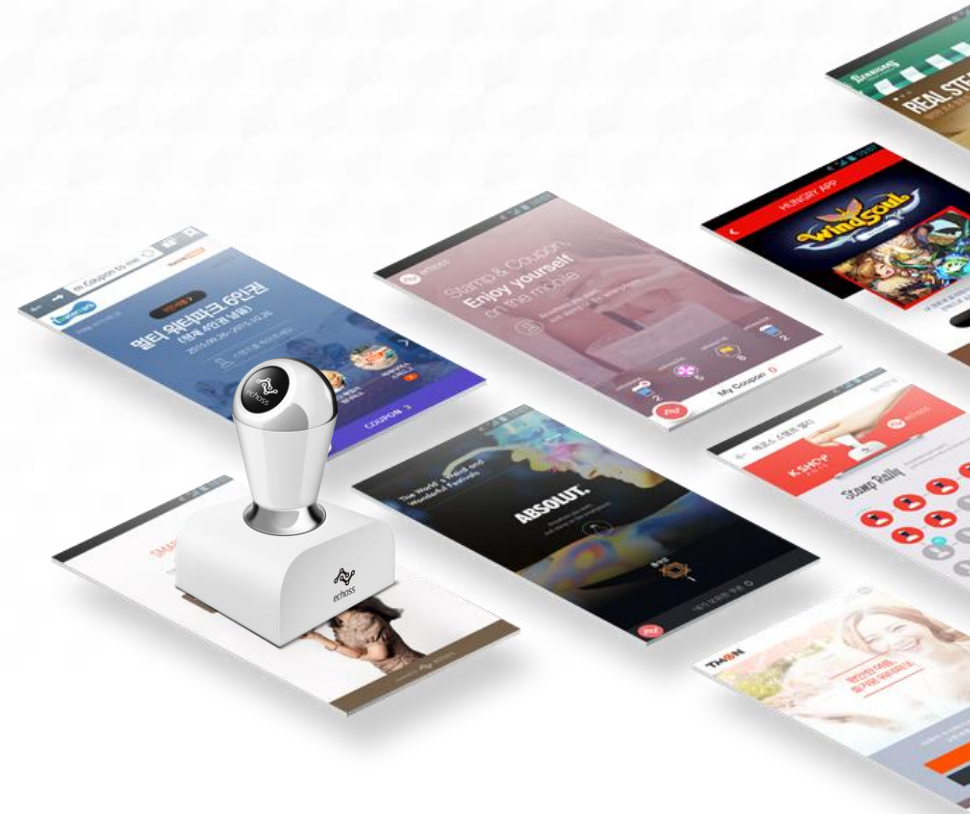




Echoss Stamp Service

How to use Echoss Stamp

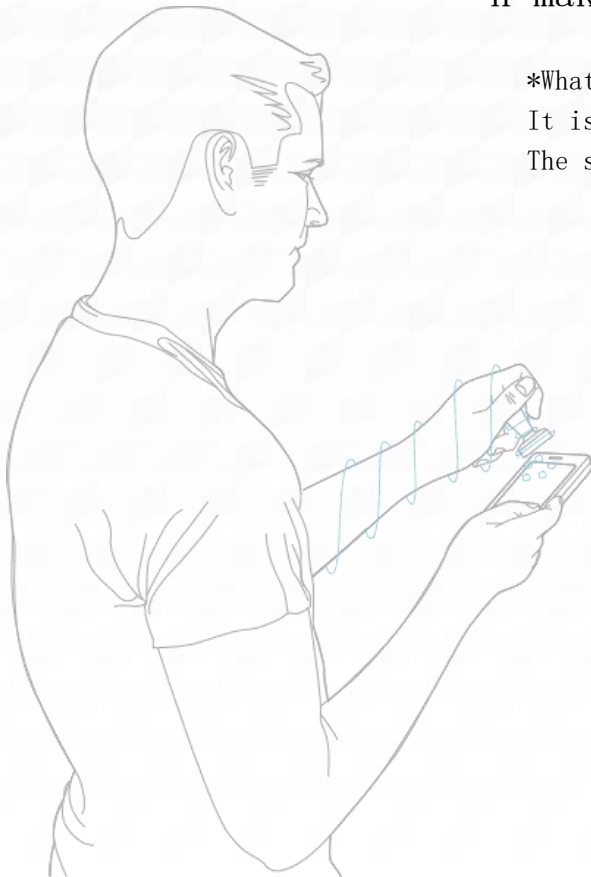


About Echoss Stamp

Echoss Stamp is a smart stamp for smartphone with combination of electrostatic energy and progressive multi-touch technology, which makes every stamp generate its unique stamp code.

*What is progressive multi-touch?

It is a mechanism where a stamp touches the screen with time delays in between each touch-point. The stamps are distinguished based on the order of the recognized touch-point.

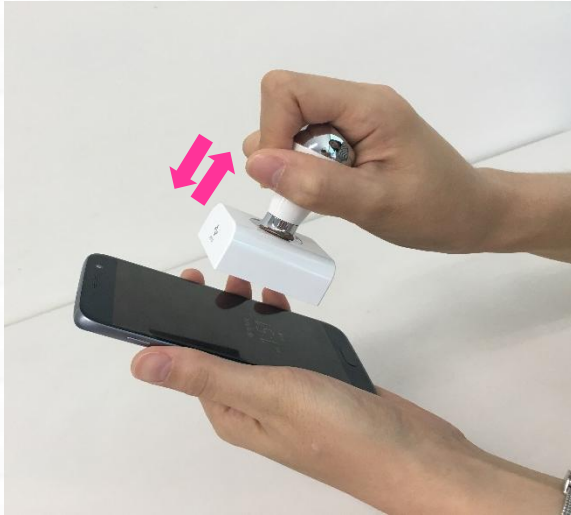


[Echoss Stamp V2.0]

- Echoss Stamp powers without battery, but with the electrostatic energy from hands.



How to use Echoss Stamp



After launching Echoss Stamp service page,

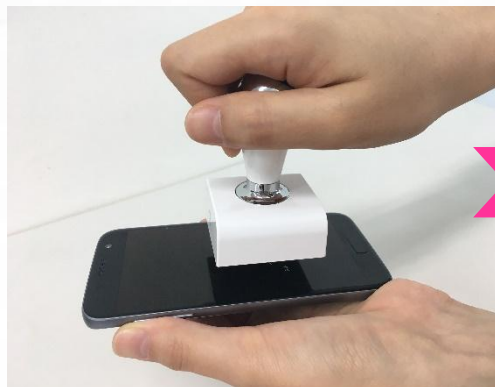
Hold a smartphone with one hand, and hold Echoss Stamp with the other hand to press on the screen.

- As Echoss Stamp functions with the progressive multi-touch technology, the user must press the stamp firmly for at least 1 second.
- Press the stamp on the screen until you feel it is pressed enough, from straight t down to straight up.
- Don' t let the stamp slip by pressing it too hard.
- If you are too quick when pressing, it might not be recognized. Please do it sl owly.

※ A phone with broken screen, thick screen protector or some phone cases may cause inaccuracies in the stamp recognition.

※ If the problem prevails, please press Echoss icon in the screen to use alternative authentication method through Echoss Manager.

Follow the steps as below:



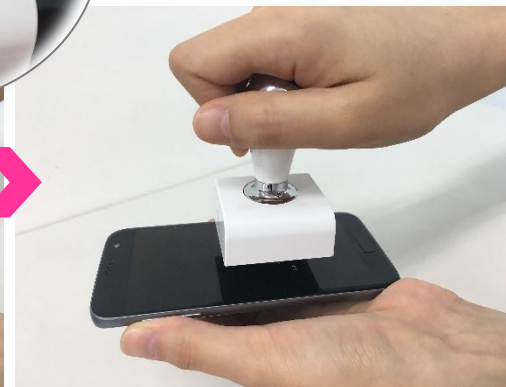
Wrap the handle with your hand firmly.



Place it gently over the screen.



Press the stamp on the screen.



Remove the stamp vertically.

How to use Echoss Stamp

Echoss Stamp can be recognized at any angles on the screen, even if it is placed in a diamond shape.

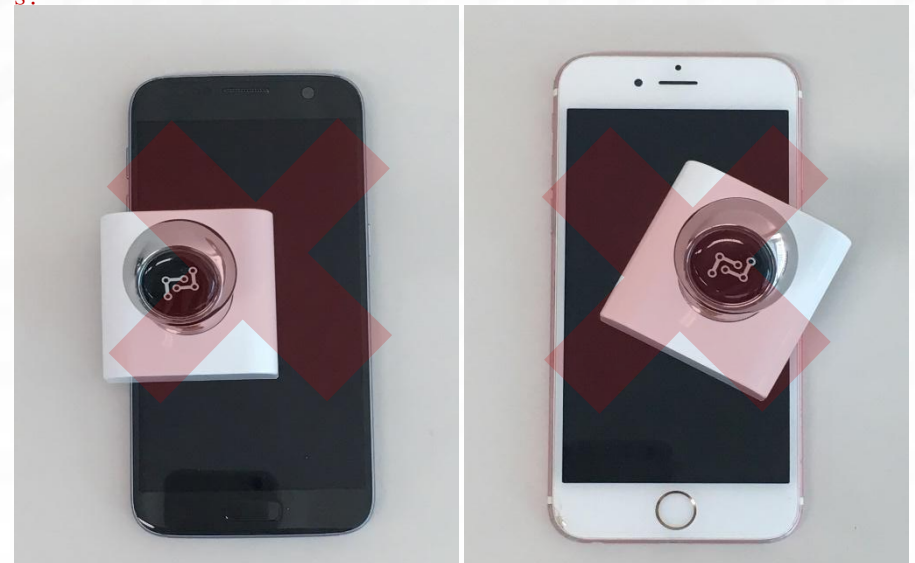
Please make sure the stamp is placed within the screen boundaries.

The stamp information can be accurately transferred when the smartphone recognizes all the multi-touch points of the stamp. If the partial area of the stamp is out of the screen, it will lead to the certification failure.

Press on the smartphone as the figures below:



Don't let the stamp go out of the smartphone's screen boundaries:



How to use Echoss Stamp

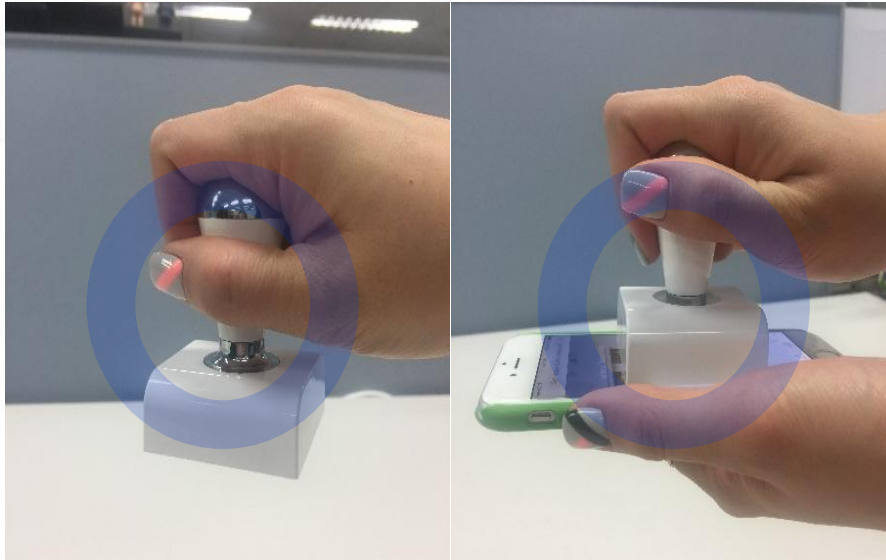
Echoss Stamp functions through electrostatic energy that makes the stamp recognizable.

Please wrap the handle with your hand so that the electrostatic energy may flow through Echoss Stamp.

If you don't hold the stamp firmly, the stamp may be unstable and cause inaccuracy.

If the stamp is not pressed fully, this may also cause inaccuracies.

Hold the stamp as in the figures below, and stamp on the screen.



Below are the wrong cases that could cause inaccuracies.

